



# Bees@Schools 2021 Insect Program Report

Lucie Vézina, MSc student



---

**UNIVERSITY**  
*of* **GUELPH**

---

# Bees@Schools 2021

## Insect Program Report

Thank you very much for participating in Bees@Schools 2021! Of the 170 nests that were returned to us in the fall of 2021, 93 of them were occupied, and a few have successful barcoding results below. Click on your school in the table of contents to see all the insect species we found!



# Insect Information from 2021

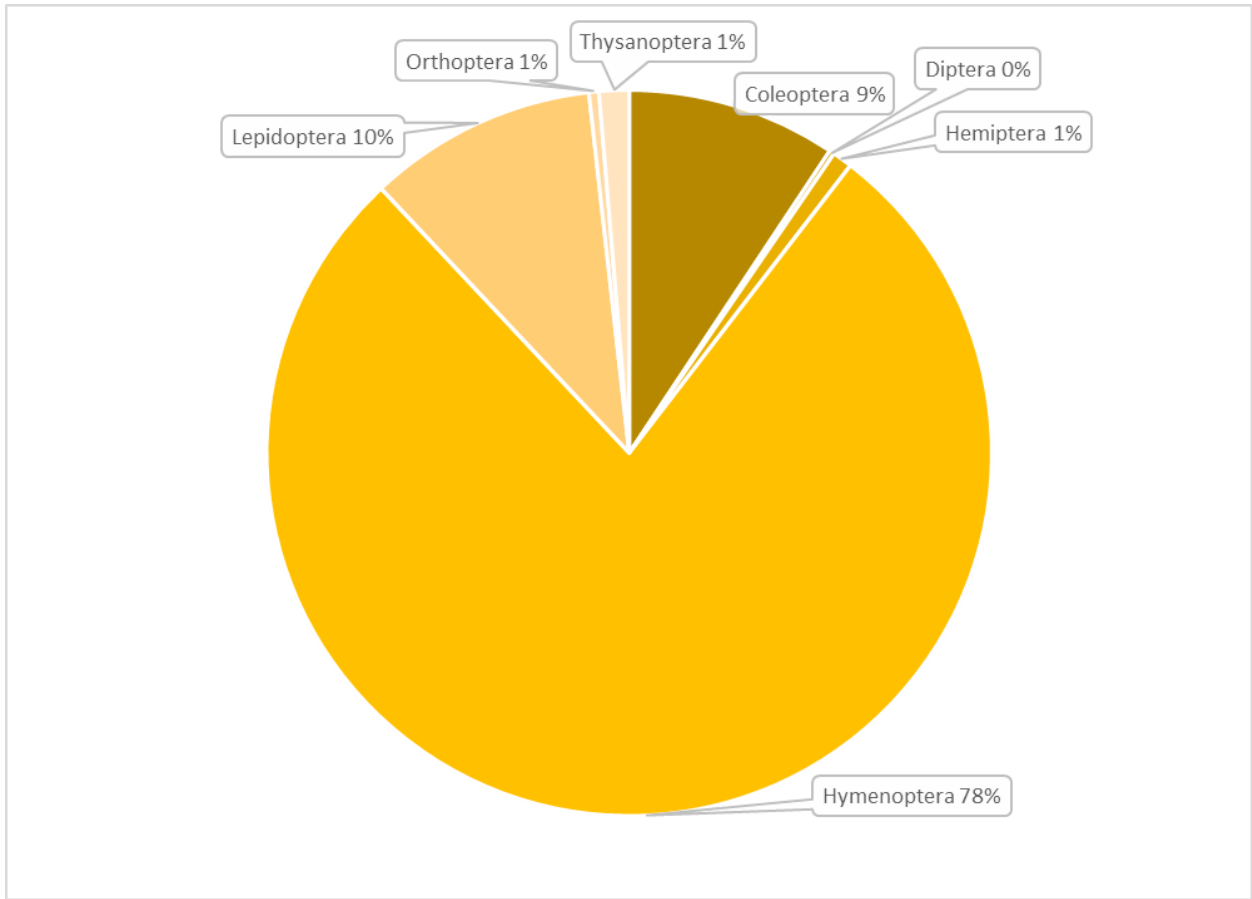


Figure 1: Proportion of total insect identifications made up of each insect order found.

## Bee Information from 2021

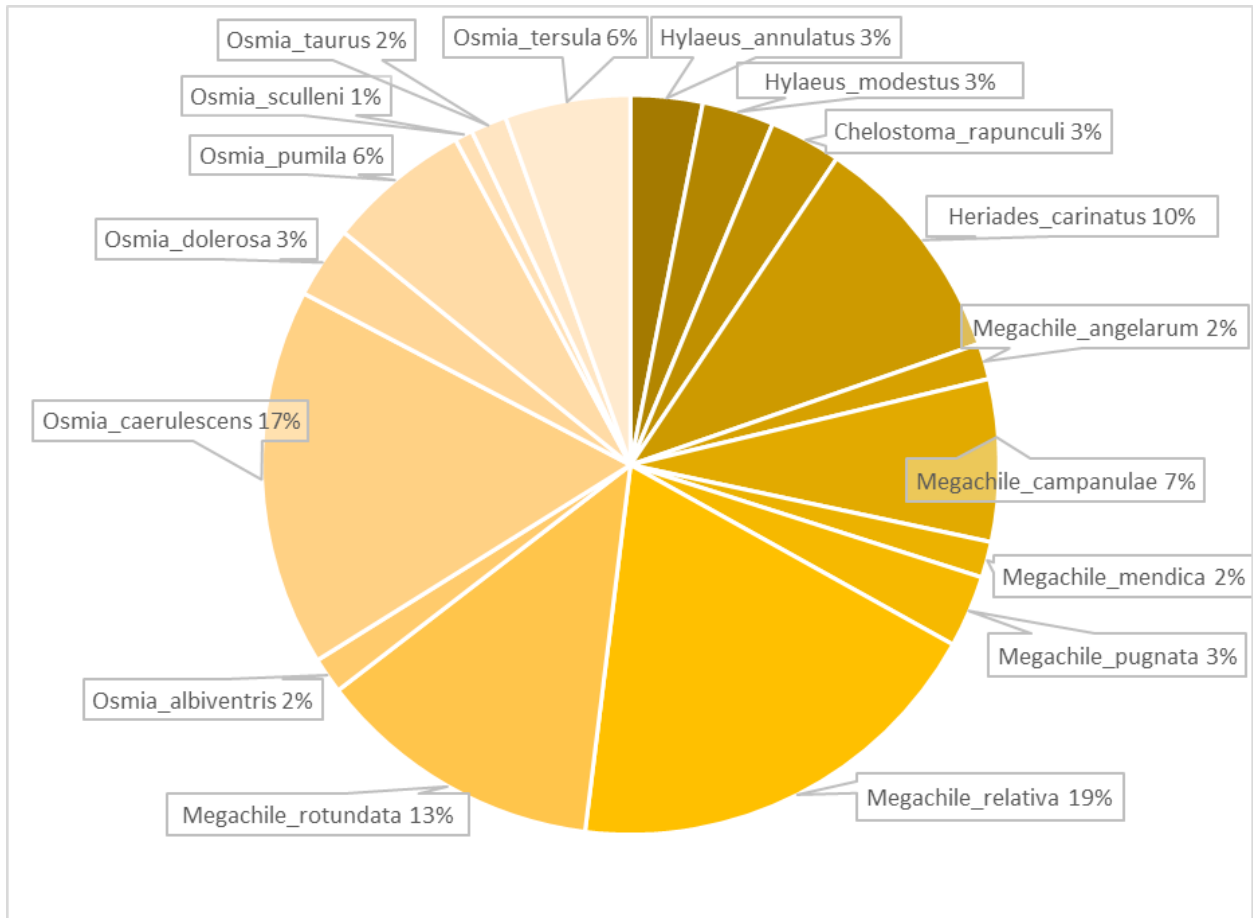


Figure 2: Proportion of total bee identifications made up of each species found.

# Background information on insect orders

- **Coleoptera** is the largest insect order, composed of beetles. Many beetles found in the nest boxes were prey for the solitary wasps that used these tubes.
- **Diptera** is a large order which includes flies. Flies may have a few reasons for being in a nest box. Some may have been prey for wasps, while others might be parasites themselves, laying their eggs in an already built bee home.
- **Hemiptera** is an order referred to as the 'true bugs'. It is most likely that these insects were brought into a nest box as prey for wasps.
- **Hymenoptera** is an order which includes bees, wasps, and ants. These nest boxes are made to target the nesting activities of a select group of solitary bees and wasps called cavity-nesters. Solitary bees and wasps are close relatives, and bees are really just vegetarian wasps. Many of the non-Hymenopteran insects in a nest box are prey for these solitary wasps.
  - Colletidae and Megachilidae are the two families of cavity-nesting bees we have in our nests! These are highlighted in blue!
    - Click the species name for more info and pictures of the bees we found: [Chelostoma rapunculi](#), [Heriades carinatus](#), [Hylaeus annulatus](#), [Hylaeus modestus](#), [Megachile angularum](#), [Megachile campanulae](#), [Megachile mendica](#), [Megachile pugnata](#), [Megachile relativa](#), [Megachile rotundata](#), [Osmia albiventris](#), [Osmia caerulea](#), [Osmia dolerosa](#), [Osmia pumila](#), [Osmia sculleni](#), [Osmia taurus](#), [Osmia tersula](#)
  - Braconidae, Chrysididae, Eulophidae, Ichneumonidae, Pteromalidae, Sapygidae, and Torymidae are parasitic wasps, meaning they lay their eggs on another insect's pre-made nest.
  - Crabronidae, Pompilidae, and Sphecidae are predatory wasps, meaning they hunt insects like caterpillars and small bugs. o Vespidae is a large family of wasp, which includes yellowjackets, but the ones found here are likely predators.
- **Lepidoptera** include butterflies and moths. Many caterpillars are prey for solitary wasps.
- **Orthoptera** includes grasshoppers, locusts, and crickets. Many such insects are prey for solitary wasps
- **Thysanoptera** is an order of tiny insects called thrips. They are incidentally found in nests.

# School Name

<b>Insect Information from 2021</b>	<b>3</b>
<b>Background information on insect orders</b>	<b>5</b>
<b>School Name</b>	<b>6</b>
<b>Aldershot School, ON</b>	<b>8</b>
<b>Archibald Blair, BC</b>	<b>8</b>
<b>Arthur Voaden Secondary School, ON</b>	<b>8</b>
<b>Arklan Community PS, ON</b>	<b>9</b>
<b>Aspengrove School, BC</b>	<b>9</b>
<b>Barlow Creek ES, BC</b>	<b>10</b>
<b>Blythwood JPS, ON</b>	<b>10</b>
<b>Camron Heights CI, ON</b>	<b>10</b>
<b>Clarington Central SS, ON</b>	<b>11</b>
<b>Devon MS, NB</b>	<b>11</b>
<b>Drummond CS, ON</b>	<b>12</b>
<b>École Évangéline, PE</b>	<b>12</b>
<b>École Frank Ross, BC</b>	<b>12</b>
<b>École Providence, SK</b>	<b>13</b>
<b>École Sans-Frontières, AB</b>	<b>13</b>
<b>Elbow Valley ES, AB</b>	<b>13</b>
<b>Fletcher's Meadow SS, ON</b>	<b>13</b>
<b>Glendale Secondary School, ON</b>	<b>14</b>
<b>Glengarry DHS, ON</b>	<b>14</b>
<b>Highroad Academy, BC</b>	<b>14</b>
<b>Holy Cross CSS, ON</b>	<b>14</b>
<b>Howe Sound SS, BC</b>	<b>15</b>
<b>Huron Heights SS, ON</b>	<b>15</b>
<b>Ibbotson Family, ON</b>	<b>16</b>
<b>John Diefenbaker Senior School, ON</b>	<b>16</b>
<b>John McCrae Secondary School, ON</b>	<b>17</b>
<b>JW Gerth PS, ON</b>	<b>17</b>
<b>Kettle Creek PS, ON</b>	<b>18</b>
<b>Kitchener Area Enrichment - AR Kaufman PS, ON</b>	<b>18</b>
<b>Landmark Collegiate, MB</b>	<b>18</b>
<b>Lincoln M. Alexander SS, ON</b>	<b>19</b>
<b>Living Springs Christian School, AB</b>	<b>19</b>
<b>Lorne Park PS, ON</b>	<b>19</b>
<b>MacSkimming Outdoor Education Centre, ON</b>	<b>20</b>
<b>Miami School, MB</b>	<b>20</b>
<b>Mill Bay Nature School, BC</b>	<b>20</b>

<b>Mill Creek School, AB</b>	<b>20</b>
<b>Nielson Grove ES, BC</b>	<b>21</b>
<b>Ogden's, ON</b>	<b>21</b>
<b>Owen PS, ON</b>	<b>21</b>
<b>Parkdale School, PE</b>	<b>22</b>
<b>Pear Tree ES, BC</b>	<b>22</b>
<b>Pelee Island PS,ON</b>	<b>22</b>
<b>Port Hardy SS, BC</b>	<b>23</b>
<b>Red Lake District High School, ON</b>	<b>23</b>
<b>Rosemary School, AB</b>	<b>24</b>
<b>Sacred Heart High School, ON</b>	<b>24</b>
<b>Shamrock School, MB</b>	<b>25</b>
<b>St. Anne, ON</b>	<b>25</b>
<b>St. Brother Andre CHS, ON</b>	<b>25</b>
<b>St. Mary - Grafton, ON</b>	<b>26</b>
<b>St. Mary's High School (Kitchener), ON</b>	<b>26</b>
<b>St. Mother Teresa School, MB</b>	<b>26</b>
<b>St. Rose Catholic Elementary School, ON</b>	<b>26</b>
<b>St. Theresa's CHS, ON</b>	<b>27</b>
<b>Stanley Mills ON</b>	<b>27</b>
<b>Swan Valley Regional Secondary, MB</b>	<b>27</b>
<b>Tavistock PS, ON</b>	<b>28</b>
<b>The Fernie Academy, BC</b>	<b>28</b>
<b>Vincent Massey Collegiate, MB</b>	<b>28</b>
<b>Wellington Hall Academy, ON</b>	<b>28</b>
<b>Wellington Heights Secondary School, ON</b>	<b>29</b>
<b>Westdale, ON</b>	<b>29</b>
<b>Whistling Wind School, MB</b>	<b>29</b>
<b>Wilson Ave PS, ON</b>	<b>30</b>

## Aldershot School, ON

<b>Insect Order</b>	<b>Insect Family</b>	<b>Insect Species</b>
Hymenoptera	Crabronidae	<i>Trypoxylon nitidum</i>
Hymenoptera	Megachilidae	<i>Osmia taurus</i>

## Archibald Blair, BC

<b>Insect Order</b>	<b>Insect Family</b>	<b>Insect Species</b>
Hymenoptera	Crabronidae	<i>Trypoxylon frigidum</i>
Hymenoptera	Megachilidae	<i>Osmia pumila</i>

## Arthur Voaden Secondary School, ON

<b>Insect Order</b>	<b>Insect Family</b>	<b>Insect Species</b>
Hymenoptera	Megachilidae	<i>Megachile campanulae</i>
Hymenoptera	Megachilidae	<i>Megachile rotundata</i>
Hymenoptera	Vespidae	<i>Euodynerus sp. F</i>
Lepidoptera	Crambidae	<i>Desmia funeralis</i>



## Arklan Community PS, ON

<b>Insect Order</b>	<b>Insect Family</b>	<b>Insect Species</b>
Coleoptera	Lampyridae	<i>Photinus consimilis</i>
Coleoptera	Meloidae	<i>Nemognatha nemorensis</i>
Diptera	Cecidomyiidae	
Hemiptera	Aphididae	Calaphidinae (SUBFAMILY)
Hemiptera	Aphididae	<i>Tuberculatus annulatus</i>
Hymenoptera	Colletidae	<i>Hylaeus annulatus</i>
Hymenoptera	Megachilidae	<i>Heriades carinatus</i>
Hymenoptera	Megachilidae	<i>Megachile pugnata</i>
Hymenoptera	Megachilidae	<i>Megachile rotundata</i>
Hymenoptera	Megachilidae	<i>Osmia tersula</i>
Hymenoptera	Psenidae	<i>Psenulus pallipes</i>
Hymenoptera	Sapyginae	<i>Sapyga louisii</i>
Hymenoptera	Sapyginae	<i>Sapyga similis</i>
Hymenoptera	Vespidae	<i>Symmorphus bifasciatus</i>

## Aspengrove School, BC

<b>Insect Order</b>	<b>Insect Family</b>	<b>Insect Species</b>
Hymenoptera	Vespidae	<i>Ancistrocerus albophaleratus</i>

## Barlow Creek ES, BC

<b>Insect Order</b>	<b>Insect Family</b>	<b>Insect Species</b>
Hymenoptera	Crabronidae	<i>Trypoxylon lactitarse</i>
Hymenoptera	Megachilidae	<i>Megachile relativa</i>
Hymenoptera	Megachilidae	<i>Osmia pumila</i>

## Blythwood JPS, ON

<b>Insect Order</b>	<b>Insect Family</b>	<b>Insect Species</b>
Coleoptera	Chrysomelidae	<i>Plagiodera versicolora</i>
Coleoptera	Dermestidae	Megatominae (SUBFAMILY)
Hymenoptera	Megachilidae	<i>Megachile rotundata</i>
Hymenoptera	Vespidae	<i>Symmorphus bifasciatus</i>
Hymenoptera	Vespidae	<i>Symmorphus canadensis</i>
Lepidoptera	Crambidae	<i>Vaxi critica</i>
Lepidoptera	Momphidae	<i>Mompha terminella</i>

## Camron Heights CI, ON

<b>Insect Order</b>	<b>Insect Family</b>	<b>Insect Species</b>
Hymenoptera	Colletidae	<i>Hylaeus modestus</i>

## Clarington Central SS, ON

<b>Insect Order</b>	<b>Insect Family</b>	<b>Insect Species</b>
Hymenoptera	Megachilidae	<i>Megachile rotundata</i>

## Devon MS, NB

<b>Insect Order</b>	<b>Insect Family</b>	<b>Insect Species</b>
Hymenoptera	Megachilidae	<i>Osmia albiventris</i>
Hymenoptera	Megachilidae	<i>Osmia caerulescens</i>
Hymenoptera	Megachilidae	<i>Osmia dolerosa</i>
Hymenoptera	Megachilidae	<i>Osmia pumila</i>
Hymenoptera	Megachilidae	<i>Osmia sculleni</i>
Hymenoptera	Pemphredonidae	<i>Passaloecus gracilis</i>
Hymenoptera	Sapygidae	<i>Sapyga lousi</i>
Hymenoptera	Vespidae	<i>Ancistrocerus campestris</i>
Hymenoptera	Vespidae	<i>Ancistrocerus gazella</i>
Hymenoptera	Vespidae	<i>Symmorphus canadensis</i>

## Drummond CS, ON

<b>Insect Order</b>	<b>Insect Family</b>	<b>Insect Species</b>
Hymenoptera	Megachilidae	<i>Osmia tersula</i>

## École Évangéline, PE

<b>Insect Order</b>	<b>Insect Family</b>	<b>Insect Species</b>
Coleoptera	Lampyridae	<i>Photinus consimilis</i>
Hymenoptera	Megachilidae	<i>Osmia albiventris</i>
Hymenoptera	Megachilidae	<i>Osmia pumila</i>
Hymenoptera	Sphecidae	<i>Isodontia mexicana</i>
Hymenoptera	Vespidae	<i>Ancistrocerus antilope</i>
Lepidoptera	Gracillariidae	<i>Parectopa pennsylvaniella</i>

## École Frank Ross, BC

<b>Insect Order</b>	<b>Insect Family</b>	<b>Insect Species</b>
Coleoptera	Lampyridae	<i>Photinus consimilis</i>
Hymenoptera	Colletidae	<i>Hylaeus annulatus</i>
Hymenoptera	Vespidae	<i>Ancistrocerus campestris</i>

## École Providence, SK

<b>Insect Order</b>	<b>Insect Family</b>	<b>Insect Species</b>
Coleoptera	Chrysomelidae	<i>Plagiodera versicolora</i>
Dermaptera	Forficulidae	<i>Forficula auricularia</i>
Hymenoptera	Megachilidae	<i>Megachile relativa</i>

## École Sans-Frontières, AB

<b>Insect Order</b>	<b>Insect Family</b>	<b>Insect Species</b>
Hymenoptera	Vespidae	<i>Ancistrocerus albolacteus</i>

## Elbow Valley ES, AB

<b>Insect Order</b>	<b>Insect Family</b>	<b>Insect Species</b>
Hymenoptera	Megachilidae	<i>Megachile relativa</i>

## Fletcher's Meadow SS, ON

<b>Insect Order</b>	<b>Insect Family</b>	<b>Insect Species</b>
Hymenoptera	Chrysididae	Chrysidinae (SUBFAMILY)
Hymenoptera	Crabronidae	<i>Trypoxylon nitidium</i>

## Glendale Secondary School, ON

<b>Insect Order</b>	<b>Insect Family</b>	<b>Insect Species</b>
Hymenoptera	Megachilidae	<i>Megachile campanulae</i>

## Glengarry DHS, ON

<b>Insect Order</b>	<b>Insect Family</b>	<b>Insect Species</b>
Hymenoptera	Formicidae	<i>Camponotus nearcticus</i>

## Highroad Academy, BC

<b>Insect Order</b>	<b>Insect Family</b>	<b>Insect Species</b>
Hymenoptera	Megachilidae	<i>Osmia caerulescens</i>
Hymenoptera	Vespidae	<i>Symmorphus bifasciatus</i>
Hymenoptera	Vespidae	<i>Symmorphus canadensis</i>
Lepidoptera	Crambidae	<i>Vaxi critica</i>
Lepidoptera	Gelechiidae	<i>Coleotechnites blastovora</i>

## Holy Cross CSS, ON

<b>Insect Order</b>	<b>Insect Family</b>	<b>Insect Species</b>
Hymenoptera	Crabronidae	<i>Trypoxylon carinatum</i>

## Howe Sound SS, BC

<b>Insect Order</b>	<b>Insect Family</b>	<b>Insect Species</b>
Coleoptera	Meloidae	<i>Nemognatha nemorensis</i>
Hymenoptera	Megachilidae	<i>Osmia caerulescens</i>
Hymenoptera	Sphecidae	<i>Isodontia mexicana</i>
Hymenoptera	Vespidae	<i>Euodynerus sp. F</i>
Hymenoptera	Vespidae	<i>Symmorphus bifasciatus</i>
Hymenoptera	Vespidae	<i>Symmorphus canadensis</i>
Lepidoptera	Gracillariidae	<i>Parectopa pennsylvaniella</i>
Lepidoptera	Tortricidae	<i>Epinotia albangulana</i>

## Huron Heights SS, ON

<b>Insect Order</b>	<b>Insect Family</b>	<b>Insect Species</b>
Coleoptera	Chrysomelidae	<i>Phratora purpurea</i>
Hymenoptera	Vespidae	<i>Ancistrocerus campestris</i>
Hymenoptera	Vespidae	<i>Symmorphus bifasciatus</i>
Hymenoptera	Vespidae	<i>Symmorphus cristatus</i>

## Ibbotson Family, ON

<b>Insect Order</b>	<b>Insect Family</b>	<b>Insect Species</b>
Coleoptera	Chrysomelidae	<i>Chrysomela mainensis</i>
Hymenoptera	Chrysididae	Chrysidinae (SUBFAMILY)
Hymenoptera	Vespidae	<i>Ancistrocerus antilope</i>
Hymenoptera	Vespidae	<i>Symmorphus albomarginatus</i>
Hymenoptera	Vespidae	<i>Symmorphus bifasciatus</i>
Hymenoptera	Vespidae	<i>Symmorphus cristatus</i>

## John Diefenbaker Senior School, ON

<b>Insect Order</b>	<b>Insect Family</b>	<b>Insect Species</b>
Hymenoptera	Formicidae	<i>Camponotus castaneus</i>
Hymenoptera	Megachilidae	<i>Megachile angelarum</i>
Hymenoptera	Megachilidae	<i>Megachile campanulae</i>
Hymenoptera	Megachilidae	<i>Osmia caerulescens</i>
Hymenoptera	Vespidae	<i>Ancistrocerus campestris</i>
Hymenoptera	Vespidae	<i>Euodynerus sp. F</i>
Lepidoptera	Gracillariidae	<i>Parectopa pennsylvaniella</i>
Orthoptera	Gryllidae	<i>Oecanthus niveus</i>



## John McCrae Secondary School, ON

<b>Insect Order</b>	<b>Insect Family</b>	<b>Insect Species</b>
Coleoptera	Dermestidae	Megatominae (SUBFAMILY)
Hymenoptera	Megachilidae	<i>Chelostoma rapunculi</i>
Hymenoptera	Megachilidae	<i>Heriades carinatus</i>
Hymenoptera	Megachilidae	<i>Osmia caerulescens</i>
Hymenoptera	Sphecidae	<i>Isodontia mexicana</i>
Hymenoptera	Vespidae	<i>Euodynerus sp. F</i>
Hymenoptera	Vespidae	<i>Symmorphus bifasciatus</i>
Hymenoptera	Vespidae	<i>Symmorphus cristatus</i>
Lepidoptera	Tortricidae	<i>Epinotia albangulana</i>
Lepidoptera	Tortricidae	<i>Acleris semipurpurana</i>

## JW Gerth PS, ON

<b>Insect Order</b>	<b>Insect Family</b>	<b>Insect Species</b>
Coleoptera	Lampyridae	<i>Photinus consimilis</i>
Hymenoptera	Colletidae	<i>Hylaeus annulatus</i>
Hymenoptera	Psenidae	<i>Psenulus pallipes</i>
Hymenoptera	Vespidae	<i>Ancistrocerus antilope</i>
Hymenoptera	Vespidae	<i>Ancistrocerus campestris</i>
Hymenoptera	Vespidae	<i>Symmorphus bifasciatus</i>
Hymenoptera	Vespidae	<i>Symmorphus cristatus</i>

## Kettle Creek PS, ON

<b>Insect Order</b>	<b>Insect Family</b>	<b>Insect Species</b>
Hymenoptera	Vespidae	<i>Symmorphus bifasciatus</i>
Hymenoptera	Vespidae	<i>Symmorphus cristatus</i>
Lepidoptera	Crambidae	<i>Vaxi critica</i>

## Kitchener Area Enrichment - AR Kaufman PS, ON

<b>Insect Order</b>	<b>Insect Family</b>	<b>Insect Species</b>
Hymenoptera	Colletidae	<i>Hylaeus annulatus</i>
Hymenoptera	Crabronidae	<i>Trypoxylon frigidum</i>
Hymenoptera	Megachilidae	<i>Megachile mendica</i>

## Landmark Collegiate, MB

<b>Insect Order</b>	<b>Insect Family</b>	<b>Insect Species</b>
Hymenoptera	Megachilidae	<i>Coelioxys moesta</i>
Hymenoptera	Megachilidae	<i>Megachile relativa</i>
Hymenoptera	Megachilidae	<i>Megachile rotundata</i>
Lepidoptera	Gelechiidae	<i>Coleotechnites blastovora</i>

## Lincoln M. Alexander SS, ON

<b>Insect Order</b>	<b>Insect Family</b>	<b>Insect Species</b>
Hymenoptera	Megachilidae	<i>Megachile rotundata</i>
Hymenoptera	Vespidae	<i>Symmorphus bifasciatus</i>

## Living Springs Christian School, AB

<b>Insect Order</b>	<b>Insect Family</b>	<b>Insect Species</b>
Hymenoptera	Megachilidae	<i>Megachile relativa</i>

## Lorne Park PS, ON

<b>Insect Order</b>	<b>Insect Family</b>	<b>Insect Species</b>
Coleoptera	Dermeestidae	Megatominae (SUBFAMILY)
Hemiptera	Aphididae	<i>Myzus persicae</i>
Hemiptera	Aphididae	<i>Nasonovia ribisnigri</i>
Hymenoptera	Crabronidae	<i>Trypoxylon frigidum</i>
Hymenoptera	Ichneumonidae	Banchinae
Hymenoptera	Megachilidae	<i>Osmia caerulescens</i>
Hymenoptera	Vespidae	<i>Symmorphus bifasciatus</i>
Lepidoptera	Tortricidae	<i>Acleris semipurpurana</i>
Lepidoptera	Tortricidae	<i>Choristoneura fumiferana</i>

## MacSkimming Outdoor Education Centre, ON

<b>Insect Order</b>	<b>Insect Family</b>	<b>Insect Species</b>
Hymenoptera	Sphecidae	<i>Isodontia mexicana</i>
Lepidoptera	Gracillariidae	<i>Parectopa pennsylvaniella</i>

## Miami School, MB

<b>Insect Order</b>	<b>Insect Family</b>	<b>Insect Species</b>
Hymenoptera	Crabronidae	<i>Trypoxylon frigidum</i>

## Mill Bay Nature School, BC

<b>Insect Order</b>	<b>Insect Family</b>	<b>Insect Species</b>
Hymenoptera	Megachilidae	<i>Heriades carinatus</i>

## Mill Creek School, AB

<b>Insect Order</b>	<b>Insect Family</b>	<b>Insect Species</b>
Hymenoptera	Vespidae	<i>Ancistrocerus albolacteus</i>
Lepidoptera	Gelechiidae	<i>Coleotechnites atrupictella</i>
Lepidoptera	Gelechiidae	<i>Coleotechnites blastovora</i>

## Nielson Grove ES, BC

<b>Insect Order</b>	<b>Insect Family</b>	<b>Insect Species</b>
Hymenoptera	Vespidae	<i>Ancistrocerus gazella</i>
Lepidoptera	Tortricidae	<i>Epinotia albangulana</i>

## Ogden's, ON

<b>Insect Order</b>	<b>Insect Family</b>	<b>Insect Species</b>
Coleoptera	Meloidae	<i>Nemognatha nemorensis</i>
Hymenoptera	Sapyginae	<i>Sapyga similis</i>
Hymenoptera	Vespidae	<i>Euodynerus foraminatus</i>
Hymenoptera	Vespidae	<i>Symmorphus bifasciatus</i>

## Owen PS, ON

<b>Insect Order</b>	<b>Insect Family</b>	<b>Insect Species</b>
Coleoptera	Dermeestidae	Megatominae (SUBFAMILY)
Hymenoptera	Crabronidae	<i>Trypoxylon nitidium</i>

## Parkdale School, PE

<b>Insect Order</b>	<b>Insect Family</b>	<b>Insect Species</b>
Coleoptera	Chrysomelidae	<i>Gastrophysa polygoni</i>
Coleoptera	Chrysomelidae	<i>Phratora purpurea</i>
Coleoptera	Meloidae	<i>Nemognatha nemorensis</i>
Hymenoptera	Vespidae	<i>Ancistrocerus adiabatus</i>
Hymenoptera	Vespidae	<i>Ancistrocerus antilope</i>
Hymenoptera	Vespidae	<i>Symmorphus bifasciatus</i>
Hymenoptera	Vespidae	<i>Symmorphus cristatus</i>

## Pear Tree ES, BC

<b>Insect Order</b>	<b>Insect Family</b>	<b>Insect Species</b>
Hymenoptera	Psenidae	<i>Psenulus pallipes</i>

## Pelee Island PS, ON

<b>Insect Order</b>	<b>Insect Family</b>	<b>Insect Species</b>
Coleoptera	Chrysomelidae	<i>Gastrophysa polygoni</i>
Hymenoptera	Megachilidae	<i>Osmia caerulescens</i>
Hymenoptera	Vespidae	<i>Symmorphus bifasciatus</i>
Lepidoptera	Tortricidae	<i>Acleris semipurpurana</i>

## Port Hardy SS, BC

<b>Insect Order</b>	<b>Insect Family</b>	<b>Insect Species</b>
Hymenoptera	Megachilidae	<i>Megachile relativa</i>
Hymenoptera	Megachilidae	<i>Osmia albiventris</i>
Hymenoptera	Megachilidae	<i>Osmia dolerosa</i>
Hymenoptera	Megachilidae	<i>Osmia pumila</i>
Hymenoptera	Sphecidae	<i>Isodontia mexicana</i>
Hymenoptera	Vespidae	<i>Symmorphus bifasciatus</i>
Lepidoptera	Gracillariidae	<i>Parectopa pennsylvaniella</i>

## Red Lake District High School, ON

<b>Insect Order</b>	<b>Insect Family</b>	<b>Insect Species</b>
Hymenoptera	Vespidae	<i>Ancistrocerus antilope</i>

## Rosemary School, AB

<b>Insect Order</b>	<b>Insect Family</b>	<b>Insect Species</b>
Hymenoptera	Crabronidae	<i>Trypoxylon frigidum</i>
Hymenoptera	Megachilidae	<i>Heriades carinatus</i>
Hymenoptera	Megachilidae	<i>Megachile relativa</i>
Hymenoptera	Megachilidae	<i>Megachile rotundata</i>
Lepidoptera	Depressariidae	<i>Agonopterix nervosa</i>
Lepidoptera	Tortricidae	<i>Acleris britannia</i>
Lepidoptera	Tortricidae	<i>Acleris holmiana</i>

## Sacred Heart High School, ON

<b>Insect Order</b>	<b>Insect Family</b>	<b>Insect Species</b>
Coleoptera	Meloidae	<i>Nemognatha nemorensis</i>
Hymenoptera	Crabronidae	<i>Trypoxylon nitidum</i>
Hymenoptera	Megachilidae	<i>Heriades carinatus</i>
Hymenoptera	Megachilidae	<i>Megachile relativa</i>
Hymenoptera	Vespidae	<i>Ancistrocerus adiabatus</i>
Hymenoptera	Vespidae	<i>Ancistrocerus antilope</i>
Hymenoptera	Vespidae	<i>Symmorphus bifasciatus</i>
Hymenoptera	Vespidae	<i>Symmorphus canadensis</i>



## Shamrock School, MB

<b>Insect Order</b>	<b>Insect Family</b>	<b>Insect Species</b>
Hymenoptera	Megachilidae	<i>Megachile relativa</i>
Hymenoptera	Megachilidae	<i>Osmia tersula</i>
Hymenoptera	Vespidae	<i>Ancistrocerus adiabatus</i>
Hymenoptera	Vespidae	<i>Symmorphus bifasciatus</i>

## St. Anne, ON

<b>Insect Order</b>	<b>Insect Family</b>	<b>Insect Species</b>
Hymenoptera	Crabronidae	<i>Trypoxylon nitidum</i>
Hymenoptera	Vespidae	<i>Symmorphus bifasciatus</i>

## St. Brother Andre CHS, ON

<b>Insect Order</b>	<b>Insect Family</b>	<b>Insect Species</b>
Coleoptera	Chrysomelidae	<i>Gastrophysa polygoni</i>

## St. Mary - Grafton, ON

<b>Insect Order</b>	<b>Insect Family</b>	<b>Insect Species</b>
Hymenoptera	Megachilidae	<i>Megachile relativa</i>
Hymenoptera	Sphecidae	<i>Isodontia mexicana</i>
Hymenoptera	Vespidae	<i>Symmorphus bifasciatus</i>
Lepidoptera	Gracillariidae	<i>Parectopa pennsylvaniella</i>

## St. Mary's High School (Kitchener), ON

<b>Insect Order</b>	<b>Insect Family</b>	<b>Insect Species</b>
Coleoptera	Meloidae	<i>Nemognatha nemorensis</i>

## St. Mother Teresa School, MB

<b>Insect Order</b>	<b>Insect Family</b>	<b>Insect Species</b>
Hymenoptera	Megachilidae	<i>Osmia dolerosa</i>
Hymenoptera	Sphecidae	<i>Isodontia mexicana</i>
Hymenoptera	Vespidae	<i>Symmorphus bifasciatus</i>

## St. Rose Catholic Elementary School, ON

<b>Insect Order</b>	<b>Insect Family</b>	<b>Insect Species</b>
Hymenoptera	Crabronidae	<i>Trypoxylon nitidum</i>

## St. Theresa's CHS, ON

<b>Insect Order</b>	<b>Insect Family</b>	<b>Insect Species</b>
Hymenoptera	Formicidae	<i>Camponotus nearcticus</i>
Lepidoptera	Depressariidae	<i>Agonopterix nervosa</i>

## Stanley Mills ON

<b>Insect Order</b>	<b>Insect Family</b>	<b>Insect Species</b>
Hymenoptera	Megachilidae	<i>Heriades carinatus</i>
Hymenoptera	Sapyginae	<i>Sapyga lousi</i>
Hymenoptera	Vespidae	<i>Symmorphus bifasciatus</i>

## Swan Valley Regional Secondary, MB

<b>Insect Order</b>	<b>Insect Family</b>	<b>Insect Species</b>
Coleoptera	Lampyridae	<i>Photinus consimilis</i>
Hymenoptera	Colletidae	<i>Hylaeus annulatus</i>
Hymenoptera	Megachilidae	<i>Megachile relativa</i>

## Tavistock PS, ON

<b>Insect Order</b>	<b>Insect Family</b>	<b>Insect Species</b>
Hymenoptera	Crabronidae	<i>Trypoxylon frigidum</i>
Hymenoptera	Vespidae	<i>Euodynerus foraminatus</i>

## The Fernie Academy, BC

<b>Insect Order</b>	<b>Insect Family</b>	<b>Insect Species</b>
Hymenoptera	Vespidae	<i>Ancistrocerus albolacteus</i>

## Vincent Massey Collegiate, MB

<b>Insect Order</b>	<b>Insect Family</b>	<b>Insect Species</b>
Hymenoptera	Crabronidae	<i>Trypoxylon nitidum</i>
Hymenoptera	Vespidae	<i>Ancistrocerus antilope</i>

## Wellington Hall Academy, ON

<b>Insect Order</b>	<b>Insect Family</b>	<b>Insect Species</b>
Hymenoptera	Vespidae	<i>Symmorphus canadensis</i>
Lepidoptera	Crambidae	<i>Vaxi critica</i>

## Wellington Heights Secondary School, ON

<b>Insect Order</b>	<b>Insect Family</b>	<b>Insect Species</b>
Coleoptera	Meloidae	<i>Nemognatha nemorensis</i>
Hymenoptera	Megachilidae	<i>Megachile relativa</i>
Hymenoptera	Vespidae	<i>Ancistrocerus albophaleratus</i>
Lepidoptera	Depressariidae	<i>Carcina quercana</i>

## Westdale, ON

<b>Insect Order</b>	<b>Insect Family</b>	<b>Insect Species</b>
Hymenoptera	Chrysididae	Chrysidinae (SUBFAMILY)
Lepidoptera	Gelechiidae	<i>Coleotechnites blastovora</i>

## Whistling Wind School, MB

<b>Insect Order</b>	<b>Insect Family</b>	<b>Insect Species</b>
Coleoptera	Lampyridae	<i>Photinus aquilonius</i>
Hymenoptera	Megachilidae	<i>Megachile relativa</i>

# Wilson Ave PS, ON

<b>Insect Order</b>	<b>Insect Family</b>	<b>Insect Species</b>
Coleoptera	Lampyridae	<i>Photinus consimilis</i>
Hymenoptera	Colletidae	Belytinae (SUBFAMILY)
Hymenoptera	Vespidae	<i>Symmorphus bifasciatus</i>
Hymenoptera	Vespidae	<i>Symmorphus cristatus</i>
Lepidoptera	Crambidae	<i>Vaxi critica</i>
Lepidoptera	Pyralidae	<i>Moodna ostrinella</i>